

APPROVED IN ACCORDANCE WITH THE EUROPEAN STANDARD 2014/34/EU - ATEX

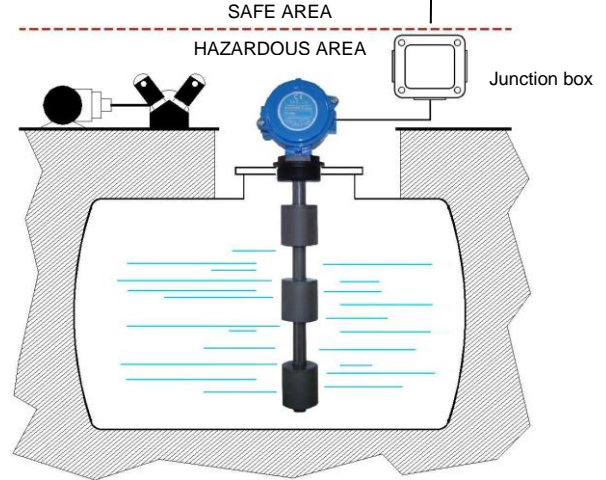


Safety barrier
See SAFE SW

Exia GOST-R Ex

These instruments, intrinsically safe certified:

CESI 03 ATEX 265 Ext.2 II 1G Exia IIC T4/T5/T6 Ga,
CESI 03 ATEX 265 Ext.2 II 1/2G Exia IIC T4/T5/T6 Ga/Gb,
are used to control the level of liquids or fuel in tanks, both underground and outdoors, installed in hazardous areas where flammable products are treated.

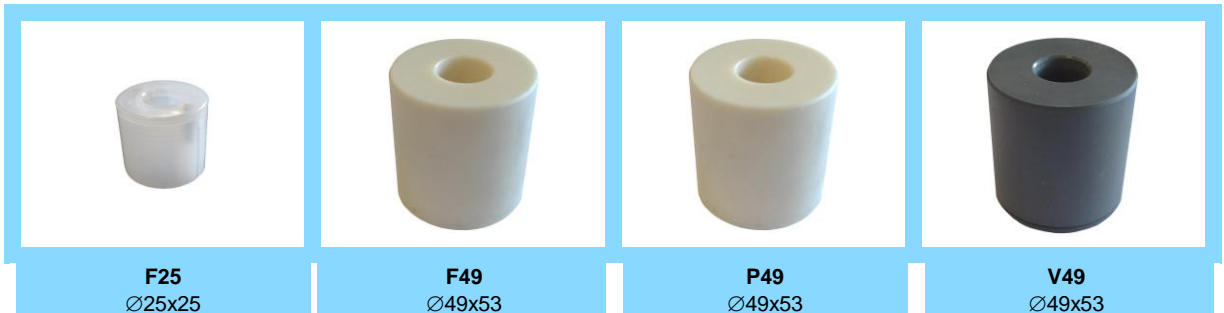


GENERAL CHARACTERISTICS

- **PVC – PP – PVDF**
- Up to 6 switch points.
- Up to 5 m length.
- Maximum working pressure 6 bar depending on used float.
- Standard working temperature up to 100°C.
- Executions up to 130°C on request.
- Operating ambient temperature
-40/+40°C = T6, -40/+55°C = T5, -40/+80°C = T4
- Minimum degree of protection IP65.

FLOAT

Tab.1



Material	PVDF				PP - Polypropylene			PVC	
	0,65		0,8		0,45		0,7		
Specific gravity	0,65		0,8		0,45		0,7		
Contact type	3	7D	4	7	4	7	4	7	
Max N. of contacts	4	3	6	6	4	3	4	3	
Max. bar	6				3			6	
Max. °C - Class	L = 100°C (T5) (T4) - N = 130°C (T4)				D = 90°C (T6)			B = 60°C (T6)	
On request	N = 130°C (T6) (T5)				-			-	

ELECTRICAL CONTACTS

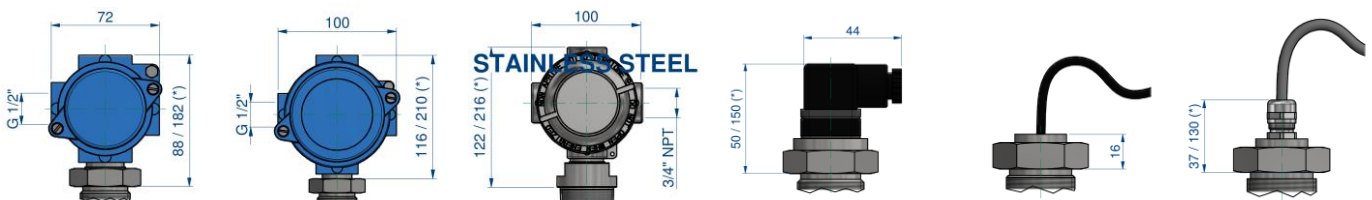
Tab.2

TYPE	POWER			VOLTAGE		CURRENT	
	VA	W		AC	DC	AC	DC
SPST	3	70	50	300	350	0,5	0,7
SPST	4	80	80	250	250	1,3	1,3
SPDT	7	60	60	230	230	1	1
SPDT	7D	20	20	150	150	0,5	0,5

ELECTRICAL OUTPUT

Tab.3

I1	I2	I3	IS1	IC1 - IC2	IP1 - IP2
IP65 housing (2G)	IP65 housing (2G)	IP66/67 housing (1G)	DIN 43650 IP65 (1G)	Cable IP65 (1G)	Cable-gland (1G)
5 terminals	18 terminals	18 terminals	DIN43650 29x29	IC1 Cable L = 1,5m IC2 Cable L = 3,0m	IP1 Brass IP68 IP2 Polyamide IP67



With heatsink - see dimension (*)

Temperature class **N = T6 - T5**

Temperature class **N = T4** heatsink not needed

PROCESS CONNECTIONS

Tab.4

Installation from inside IC- IP output				Float type	Installation from outside – available thread and flanges				
06 1/8"	08 1/4"	10 3/8"	15 1/2"		25 1"	32 1 1/4"	50 2"	F-HX Flange	DN Flange
All type of floats All type of thread				F25	G-C-N	G-C-N	-	•	•
				F49	-	-	G-C-N	-	•
				P49	-	-	G-C-N	-	•
				V49	-	-	G-C-N	-	•

Male thread

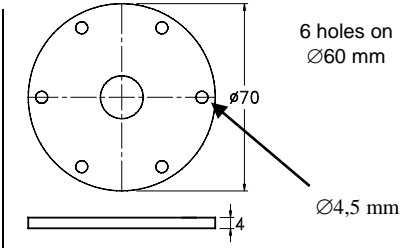
G	C	N
Parallel UNI 228/1	Conical UNI 7/1	Conical NPT

Available materials

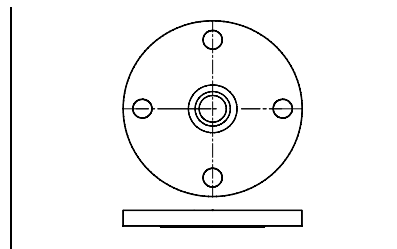
V	P	F	S
PVC	PP	PVDF	AISI-316
On request			

DN - Available materials

V	S
PVC	AISI-316
On request	



FVHX - FPHX - FFHX - FSHX



DN = UNI - DIN - ANSI Flanges

SAFETY BARRIERS

All Exia level controls must be electrically connected to the active or passive barriers according to the European Standard EN 50020. See technical bulletin SAFE SW.

A Flanged connection
A1 Threaded connection

WIRING

Tab.5

I	Independent	Separately wired contacts	1	NO	Contacts status in no level conditions
C	Common	Common wired contacts	2	NC	
S	Custom	Contacts wired on request	3	SPDT (*)	

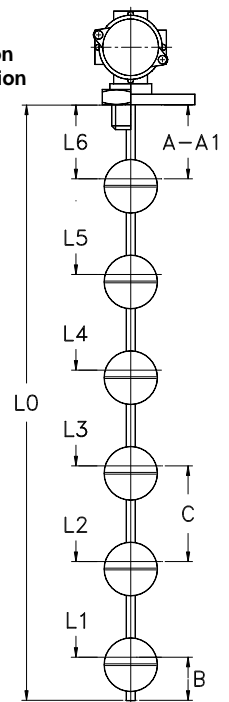
(*) Connected to barrier input just as NO or NC

SWITCH POINTS - minimum value in mm.

Tab.6

The switch points L1 ÷ L6 are measured from the stop of the fitting or flange connection. General tolerances on switch points ± 3 mm.

	Minimum distance in mm.							
	F25		F49		P49		V49	
A	20		40		40		40	
A1	35		60		60		60	
B	25		40		40		40	
C	50		80		80		80	
Contact type	3	7D	4	7	4	7	4	7
Max. N. contacts	4	3	6	6	4	3	4	3



NOMENCLATURE

M2	V49	4	1300	V	50	G	V	I1	B	I22	L1÷L6	
•												Number of contacts S1 / M2÷M6
	•											Tab.1 Float
		•										Tab.2 Electrical contact
			•									- Total length = L0 in mm. (See drawing)
				•								Tab.4 Rod material
					•							Tab.4 Process connection dimension
						•						Tab.4 Process connection thread
							•					Tab.4 Process connection material
								•				Tab.3 Electrical output
									•			Tab.1 Temperature class
										•		Tab.5 Wiring and contact status
											•	Tab.6 Switch points (mm)

Request form

External mounting

Internal mounting

I1 I2

Electrical housing IP 65
W1 max. 5 terminals 70mm
W2 max. 18 terminals 100mm

I3

Electrical housing IP 66/67
Stainless steel - AISI 316
Max. 18 terminals

IS1 IS2

Plug DIN 43650
29x29 or 15x15
Max 3 terminals

IP1 IP2

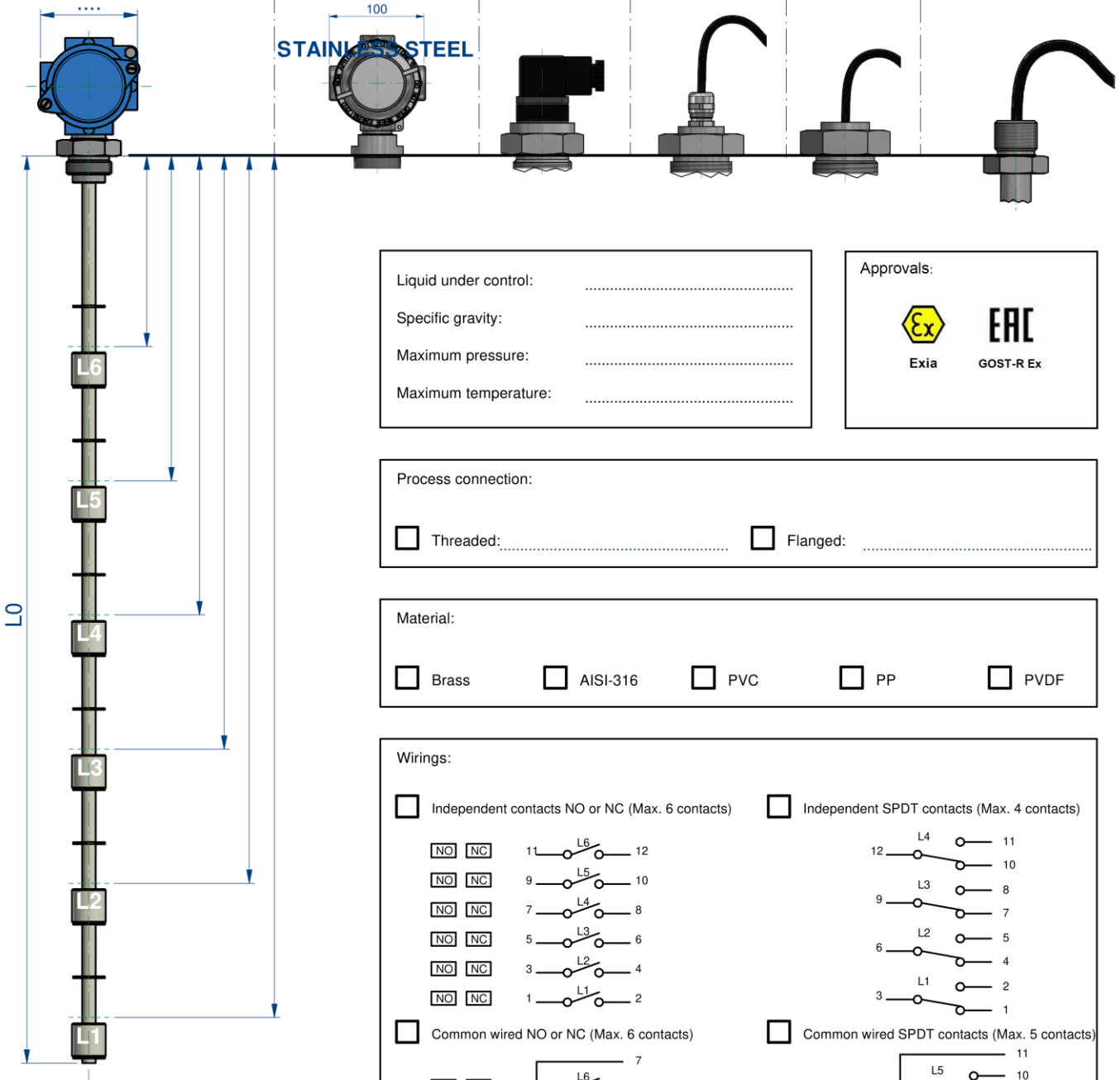
P1 Cable-gland IP68
P2 Cable-gland IP67
L cable.....mm

IC

Cable L.....mm

IC

Only internal mounting
Cable L.....mm



Total length
L0 (mm)

Liquid under control:

Specific gravity:

Maximum pressure:

Maximum temperature:

Approvals:



Exia



GOST-R Ex

Process connection:

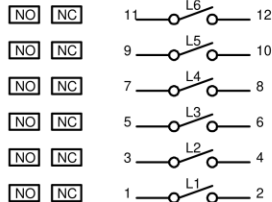
Threaded:..... Flanged:

Material:

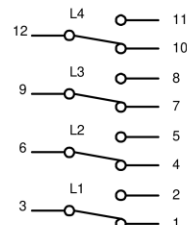
Brass AISI-316 PVC PP PVDF

Wirings:

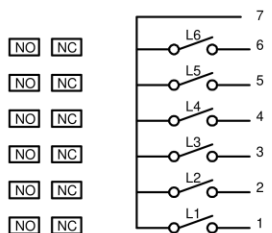
Independent contacts NO or NC (Max. 6 contacts)



Independent SPDT contacts (Max. 4 contacts)



Common wired NO or NC (Max. 6 contacts)



Common wired SPDT contacts (Max. 5 contacts)

