

GENERAL CHARACTERISTICS

For all applications where it is necessary to monitor or perform pressure measurements in industrial plants.

Rugged construction for non-corrosive liquids or steam, sensing element bourdon tube. Process connections radial or axial.

- Painted steel enclosure.
- Aluminium dial.
- Bourdon tube measuring element made of copper alloy.
- Degree of protection IP31



PRESSURE RANGES

Tab.1

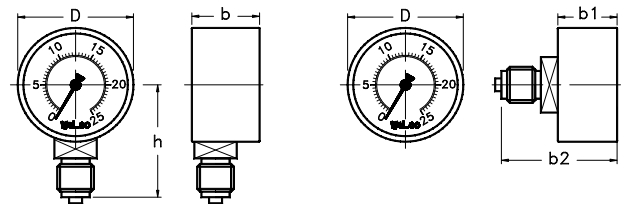
Measuring range Bar	Code	Ø mm.				
		40	50	63	80	100
-1 - 0	V001-0	↑	↑	↑	↑	↑
0 - 1	0001-0					
0 - 1,6	0001-6					
0 - 2,5	0002-5					
0 - 4	0004-0					
0 - 6	0006-0					
0 - 10	0010-0					
0 - 12	0012-0					
0 - 16	0016-0					
0 - 25	0025-0					
0 - 40	0040-0					
0 - 60	0060-0					
0 - 100	0100-0					
0 - 160	0160-0					
0 - 250	0250-0					
0 - 315	0315-0					
0 - 400	0400-0					

Dual scale on request: bar / psi

TECHNICAL DATA

Tab.2

Description			Code
Measuring element	Bourdon tube	Copper alloy	BG
Dial	Dry scale	Single scale	D1
		Dual scale	D2
Housing	Painted steel	IP31	-
Window	Polycarbonate		
Working temperature	-20 / +80 °C		080
	-30 / +120 °C		120
Accuracy	Standard 2,5%		25
	On request 1,6%		16



Ø	Dimensions [mm]					Weight [g]
	h	b	b1	b2	D	
40	40	24	24	42	42	140
50	45	26	26	46	51	160
63	50	26	26	45	63	190
80	65	34	34	68	84	400
100	88	48	48	86	114	650

PROCESS CONNECTIONS

Tab.3

Dimensions		
06	08	15
1/8"	1/4"	1/2"
Ø 40	Ø 40 – 63 – 80	Ø 80 – 100

Male thread	
G	N
UNI 228/1	NPT
On request	

Type	
R	A
Radial	Axial

NOMENCLATURE

MCV	63	0100-0	08GR	BG	D1	080	25
•							
	•						
		•					
			•				
				•			
					•		
						•	
							•

	Pressure gauge type
Tab.1	Diameter Ø mm
Tab.1	Measuring range
Tab.3	Process connections dimensions and type
Tab.2	Measuring element and material
Tab.2	Scale - Dial
Tab.2	Max. working temperature
Tab.2	Accuracy

ACCESSORIES

Flange – Bracket - Taps with pressure gauge holder

Leaflet VISOBAR pressure gauge accessories

Pag.228